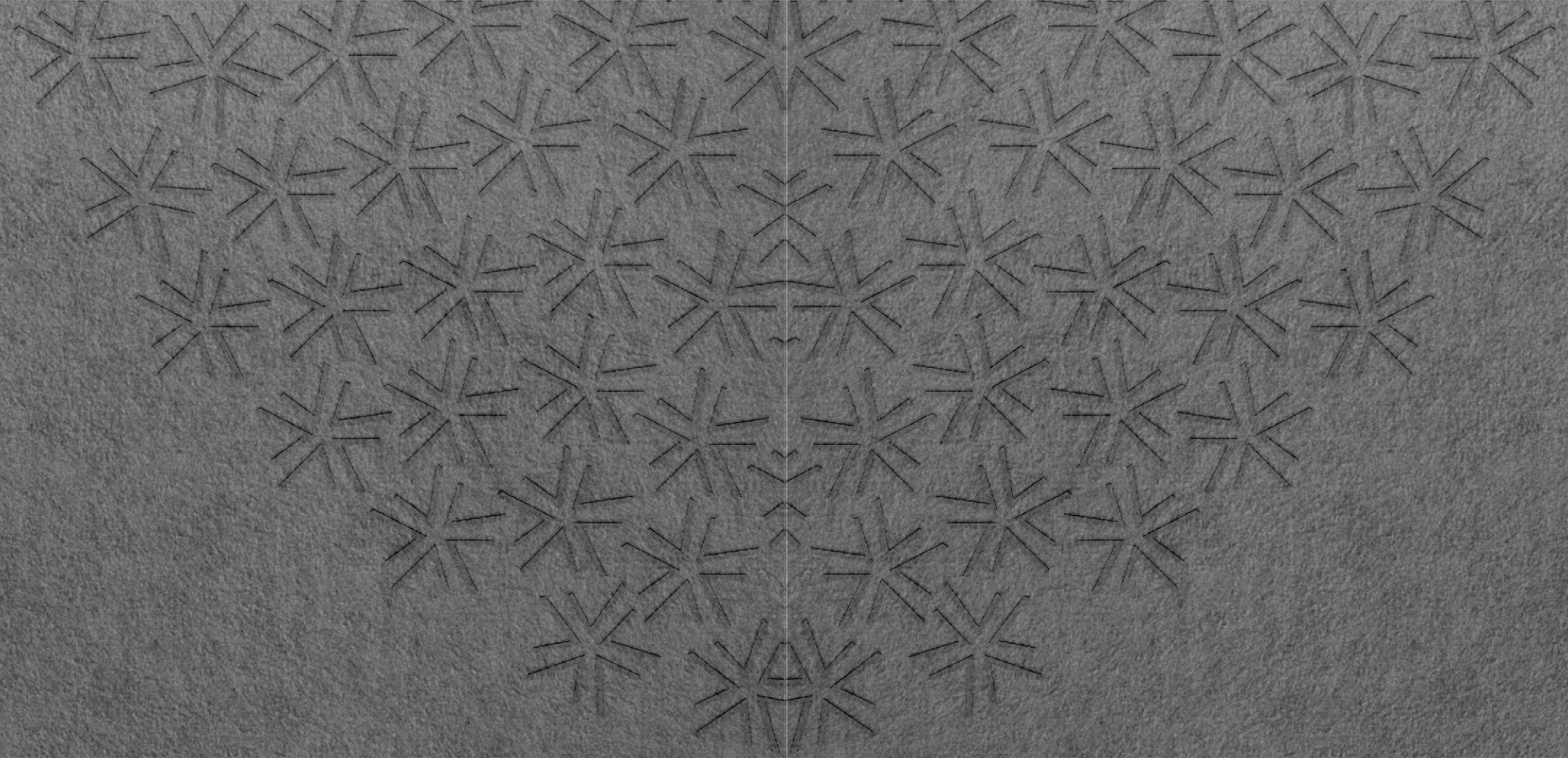
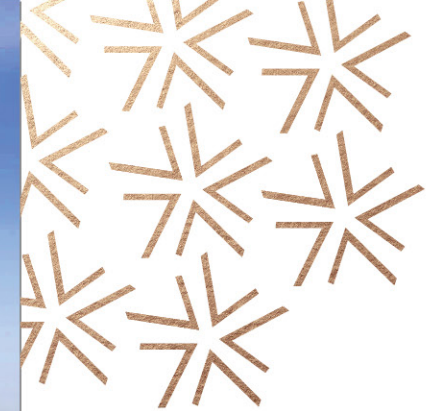


7CANAL





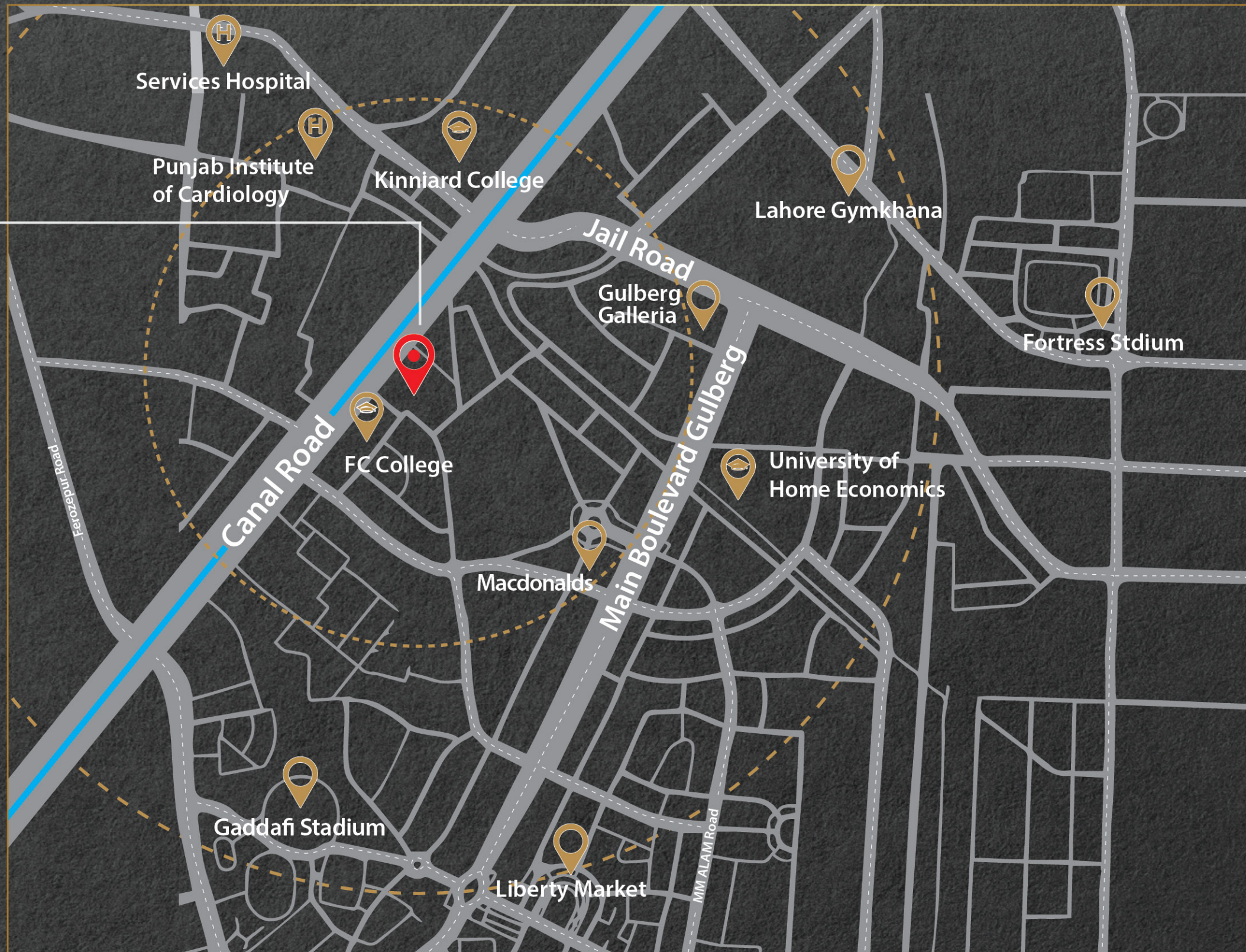


7 Canal – An Architectural Miracle

Make the most of each day you live. 7 Canal redefines contemporary living by its magnificent features offering enhanced quality of life at an incomparable value. Staying true to its reputation of excellence, the company now offers world-class living experience bringing the most prestigious international brands under one roof. Situated in the heart of the historic Lahore landmark, the Canal Road, 7 Canal encompasses a flawless harmony of residence, hospitality and healthy life style.



- On Canal Road
- Jail Road
1 Min
- Zahoor Elahi Road
1 Min
- FC College
1 Min
- Kinniard College
3 Min
- Mall Road
6 Min
- Ferozepur Road
3 Min
- Punjab Institute of Cardiology Hospital
4 Min
- Jilani Park (Race Corce Park)
4 Min
- Main Boulevard Mcdonalds
5 Min
- Gaddafi Stadium
5 Min
- Gymkhana Club
5 Min
- MM Alam Raod & Liberty Market
7 Min
- Airport
23 Min



Welcome to Nirvana

Step into a world of luxury and comfort. 7 Canal offers an innovative and customer-focused living experience in the cultural metropolitan of Pakistan coupled with an unmatched tranquility. Its central location ensures minimal travel time and hassle free drive to all key areas.



Experience the Difference

7 Canal with all its splendor and glory is yet another proof of workmanship finesse of its builders. The splendid design and spaciousness of the residential units leaves nothing to be desired. We bring to you a unique blend of grandeur and utility.





Hospitality Redefined

We welcome you to a blissful experience that comes with a wide array of options for residents to choose from.



Branded High speed Elevators

As a resident of 7 Canal, you are entitled to enjoy numerous privileges like branded high speed elevators. Our exclusive penthouses radiates artistic brilliance and style. This is a space designed for you solely to enjoy life in an oasis sprinkled with a classic vibe.





Live the Difference

The workmanship at 7 Canal integrated with the space design is supreme and the builder's reputation is outstanding. The residential units are spacious and cater to the needs of your family and yet surprisingly affordable. In comparison to the price range in various other parts of Gulberg - Lahore, your hard earned money enjoys more value at 7 Canal.





Grand Dining

All the apartments at 7 canal are well – crafted with attention to detail. We take pride in ourselves for creating distinctive space planning from bedrooms to dining areas. We want you to turn every meal into a feast, and making it an occasion worth remembering.





Open American Kitchen

Our stylishly designed open American kitchen enhances spaciousness enabling us to work efficiently while making delicious meals for your family and friends.





Spacious Bedrooms

Our well-planned bedrooms provide you with more usable space. Our clutter-free planning provisions to design additional spaces without any compromise.





All things Divine

Experience the union of new world glamour and timeless elegance, as you step into the foyer of your dream penthouse where the grand circular staircase takes you across the palatial floors, each exquisitely designed to satisfy all of your senses. Let the panoramic skyline terrace be your magic carpet to all things serene.



Luxury with a Distinct Urban Edge

Experience the union of modern glamour and timeless elegance each time the door opens into the entrance foyer of the Penthouse. Flowing across two palatial floors connected by a grand circular staircase, the exquisitely spacious residence with undeniable sophistication throughout the expanse of carefully planned living spaces and a sweeping skyline terrace.



Dressing with Style

Dress in the comfort of your favorite wardrobe and fragrances that cast away the stress of your day and you get ready for your social life. The walk-in closets in the bedrooms echo an atmosphere that inspires and soothes the mind. These exclusive closet designs are created solely for 7 Canal.



Bathrooms

Every morning should come with a fresh start. And every morning begins with the right routine. At 7 Canal apartments, enjoy our luxurious bathrooms to start your day just right.

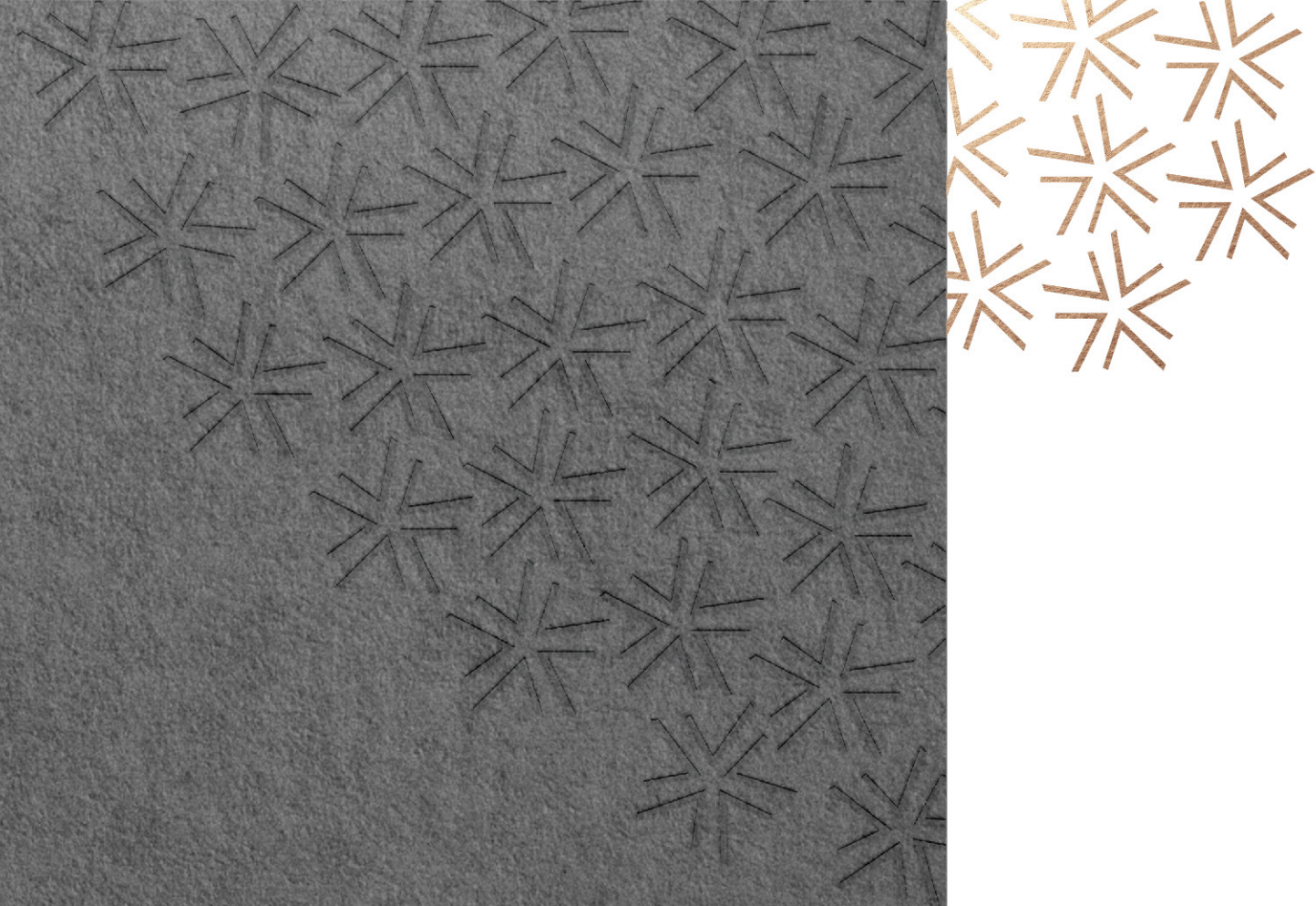




Exclusive Greenery in Miyawaki Style

With its lush planting, cascading greenery and contemporary forestry style,
7 Canal expresses everything that is about green life.





The Amenities





The Swimming Pool Dive into the World of Luxurious Amenity

The sprawling play areas provide ample opportunity to play outdoors. Swimming pools and toddlers' play area inspire both adults and children to actively engage in sports. In today's age, where kids are always glued to their gadgets, it is high time to rejuvenate them with outdoor activity that is both amusing and healthy.





Leisure Lounge

Our exclusively designed leisure lounge will pamper you and your friends with lavish facilities and offers a whole new range of leisure activities. Whenever you want to take time out from your busy schedules, you will end up feeling refreshed at the club house.

Café

Culinary excellence is one of the cornerstones at the 7 canal's café experience. Enjoy a coffee, a snack, or discussions with your friends. Exclusively for residents, the cafe is a convenient extension to your private residence above.





Day Care

At 7 Canal, our meticulously planned amenities and features help make your life comfortable and luxurious. Our project offers excellent daycare facilities to working parents in a secure, safe and pampering environment for the young.



Gym

Enjoy a daily workout while overlooking the best view of the pool area. The gym is furnished with latest cutting-edge equipment. Relax your body, mind and soul by sweating it out in our state-of-the-art- gym while socializing with your fellow residents and enjoying a joyous laughter in the evening.





The Spa

The Spa at 7 Canal reinforces relaxation and rejuvenation. Guests can immerse themselves in our treatment rooms, offering revitalizing massages, facials and body treatments in a highly professional setting.



Steam Room & Sauna

The sauna at 7 canal combines the relaxing elements of nature – wood, stone and water – to bring you an amazing retreat. The sauna is a beauty treatment, a moment to pamper yourself, to relax after a hard day. In addition to the traditional sauna we also offer a relaxing steam room.



Laundry

7 Canal offers a dedicated laundry facility to all its residents. The trained laundry staff will pick up your dirty laundry, sort it, wash, dry, fold, and deliver it back to your doorstep.



Hassle Free Multi- Level Car Parking

7 Canal has been carefully designed with modern architectural planning keeping in mind the needs and living requirements of its residents. Our project offers a multi-level Car Parking Area with ample parking spaces for maintaining a peaceful and hassle free lifestyle for its residents.

Builders and Developers



7 Canal developers are one of the leading real estate developers of Pakistan. Since its inception the company has adapted to innovative building methods, eco-friendly initiatives and best practices of the industry. Our motto is to turn the dreams of our investors into reality.

Team

Architect



USA

UK



interGraphics

Accreditation

Registered With



Income Source
Declaration
Not Required

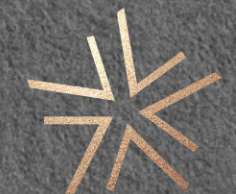


Traffic Engineering &
Transport Planning Agency



Government of The Punjab





7CANAL

USA Office:

ASLAM CAPITAL
1622 Greenleaf Ave, Des Plaines IL 60018. USA
+312-646-9111 Owais@aslamcapitalgroup.com

Head Office:

7 Canal Park, Gulberg 2, Lahore.
T: 042-359 590 77
E: info@7canaldevelopers.com | W: www.7canaldevelopers.com

UK Office:

WRM & PARTNERS
+44 771 650 8914
sales@wrmandpartners.com

DISCLAIMER

7Canal is constantly seeking ways to improve the specifications and design of the building and the modifications take place continually. While all reasonable care has been taken in preparing these architectural renderings, illustrations, pictures, photographs, and other graphic representations portrayed in this brochure, they are artistic impressions and may differ in some detail from the actual.